



Touchclave V 50 and 80-litre Vertical Autoclaves

Microprocessor Temperature and Cycle Control with Atmospheric Purge.
Electronic Control of Time and Temperature. Range From 115 °C To 134 °C.

SAFETY:

Safety over pressure valve: prevents over pressure above the maximum set limit.

Safety pressure switch: disconnects power to the heater if the unit exceeds the maximum pressure limit.

Safety thermostat and water level: disconnect power to the heater if insufficient water or over-temperature.

Safety interlock: prevents the lid being opened if the chamber is under pressure.

Safety insulation: thermally insulated lid.

Conforms fully with EN61010-1, EN61010-2-040, EN61326 and PED2014/68/EU

Features

- External case made from stainless steel.
- Incoloy stainless steel heater elements.
- RS-232 connection.
- External probe port.
- Sterilization chamber and door made from stainless steel.
- Automatic purge to atmosphere



Control Panel

1. Pressure gauge.
2. Alarm indicator.
3. Door open indicator
4. Temperature display.
5. Time display
6. Temperature set pushbutton (range from 115 °C to 134 °C).
7. Pushbutton '+' value.
8. Push button 'START'
9. Push Button 'STOP'
10. Push button '-' value.
11. Push button 'select time', (range from 3' to 99').
12. Push button 'open lid'.



Back View



Models	Cat. No	Capacity Litres	Ø Height Usable cm	HWD Exterior cm	Power W	Weight KG
TOUCHCLAVE V50	AVV50	50	30x70	117x48x62	3600	75
TOUCHCLAVE V80	AVV80	80	40x62	119x58x72	3600	100

Does not include baskets and drums, can be ordered separately.
Touchclave-V50 and 80 are single phase and require a 220-240V supply

1. Safety valve.
2. Mains power.
3. Safety thermostat
4. Steam discharge and drainage outlet



Touchclave V+ 50, 80 and 150-Litre Vertical Autoclaves

Microprocessor Temperature and Cycle Control with Atmospheric Purge.
Touchscreen Control of Time and Temperature. Range From 115 C To 134 °C.

SAFETY:

Safety over pressure valve: prevents over pressure above the maximum set limit.

Safety pressure switch: disconnects power to the heater if the unit exceeds the maximum pressure limit.

Safety thermostat and water level: disconnect power to the heater if insufficient water or over-temperature.

Safety interlock: prevents the lid being opened if the chamber is under pressure.

Safety insulation: thermally insulated lid.

Conforms fully with EN61010-1, EN61010-2-040, EN61326 and PED2014/68/EU

Features

- External case made from stainless steel.
- Incoloy stainless steel heater elements
- Process registration and download via usb.
- External probe port (50 and 80 litre models only).
- Sterilization chamber and door made from stainless steel.
- Automatic purge to atmosphere.
- 10 user-configurable programs.

Control Panel

1. TFT touch screen.
2. Pressure gauge.
3. Push button open lid.



Models	Cat. No	Capacity Litres	Ø Height Usable cm	HWD Exterior cm	Power W	Weight KG
TOUCHCLAVE V50+	AVPV50	50	30x70	117x48x62	3600	75
TOUCHCLAVE V80+	AVPV80	80	40x62	119x58x72	3600	100
TOUCHCLAVE V150+	AVPV150	150	50x70	118x80x95	7500	225

Does not include baskets and drums, can be ordered separately.

Touchclave-V50+ and 80+ are single phase and require a 220-240V supply

Touchclave-V+150 is 3-phase and requires 400-440V supply.

Popular Option



Data Printer – Details of program, temperature, pressure, time and stage.

Cat No. **AVTDP**

1. Safety valve.
2. Mains power.
3. Safety thermostat
4. Steam empty valve and Drain selector valve.
5. USB connector.

Back View



For a full list of options and accessories, please see below



Touchclave V+Dry 50, 80 and 150-litre Vertical Autoclaves

Microprocessor Process Control.

Automatic Pre-Vacuum Air Removal and Vacuum Dry Functions

Programmable Temperature From 105 °C To 134 °C

Conformity

EN61010-1

Safety for Equipment for Laboratory Use

EN61010-2-040

Safety for Sterilizer Equipment for Laboratory Use

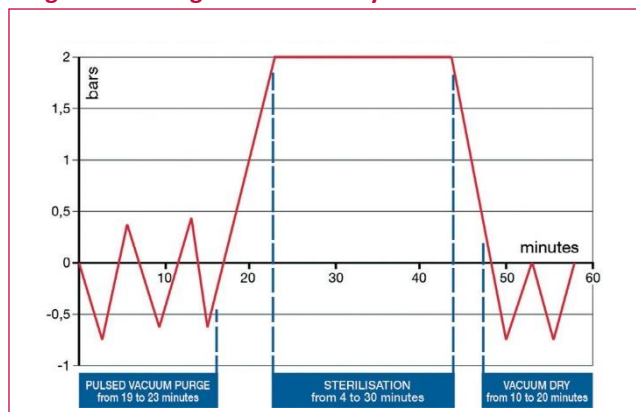
EN61326

Electromagnetic Compatibility for Equipment For Laboratory Use.

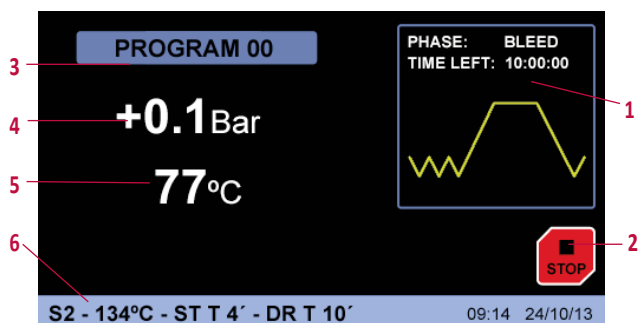
Features

- Pulsed vacuum system and atmosphere purge. External steam generator (except 150-litre autoclave).
- Water reservoir for clean water for the steam generator boiler. External water connection if required.
- 6 function modes.
- RS 232 for PC parameters printing (back side). Printer output.
- USB output for PEN-DRIVE data logging. Connection for a second temperature sensor. 10 customer set programs.
- External probe port (except 150-liter autoclave).

Diagram Showing the Function Cycle



Touchscreen Control Panel



1. Graphical representation of real time process
2. Start/Stop.
3. Running program.
4. Pressure indicator.
5. Temperature indicator.
6. Cycle parameters.

Popular Option



Data Printer – Details of program, temperature, pressure, time and stage.

Cat No. **AVTDP**

SAFETY

Safety: The lid cannot be opened if the chamber is under pressure.

Safety valve: Prevents over pressure over the maximum limit.

Safety pressure switch: switches the heater power off to if over pressure.

Safety Lid: insulated lid protection.

Microprocessor Features

The microprocessor controls the performing of the air extraction process, sterilizing and drying, executing the selected procedures and commands by the user, adjusting the following parameters:

- Sterilization temperature from 105°C up to 134°C.
- Sterilization time from 3 to 59mins.
- Drying time from 20 to 60mins.
- Up to 10 user-configurable programs.
- Six operating modes:
 - Solid 1 - Solid 2 (vacuum). - Solid 3 (vacuum) - Drying
 - Liquids - Liquids (2 probes)
- Verification test
 - Vacuum - Bowie Dick.
- Languages (Spanish, English, French).
- Printer module On/Off. - Clock: date/time.
- - External water: on/off.
- Configurable passwords.
- Calibration (adjustment offset)
- Temperature probe 1 - Temperature probe 2
- Water dosing. - Pressure
- Audible and visual alarm for overtemperature and insufficient temperature.
- Network failure detection
- data logging with capacity For >500 cycles.
- Internal cleaning program
- Graphical representation of real time process

Models	Cat. No	Capacity Litres	Ø Height Usable cm	HWD Exterior cm	Temp ° C	Water Reservoir Cap L	Basket Size	Power W	Weight KG
TOUCHCLAVE V+DRY50	AVPDV50	50	30x63	117x48x62	105-134	10	3	3600	108
TOUCHCLAVE V+DRY80	AVPDV80	80	40x60	119x58x72	105-134	10	2	3600	136
TOUCHCLAVE V+DRY150	AVPDV150	150	50x70	118x80x95	105-134	20	3	7500*	250

Does not include baskets and drums, can be ordered separately.
 Touchclave-V50+ and 80+ are single phase and require a 220-240V supply
 Touchclave-V+150 is 3-phase and requires 400-440V supply.

Parameters and Programs Pre-Installed in the Autoclave Microprocessor

(Note: All these parameters are adjustable by the user)

No. Programme	Description	Temp. Sterilization	Time Sterilization	Time Dry	Purge
0	Free	-	-	-	-
1	Unwrapped Instruments	134° C	4 Min	15 Min	2 (1)
2	Wrapped Instruments	134° C	12 Min	30 Min	3 (2)
3	CJD	134° C	20 Min	20 Min	3 (2)
4	Delicate Unwrapped	121	15 Min	15 Min	2 (1)
5	Delicate Wrapped	121	30 Min	30 Min	3 (2)
6	Disinfecting	105	25 Min	15 Min	1 (3)
7	Liquids	121	30 Min	-	1 (3)
8	Solids	121	15 Min	30 Min	1 (3)
9	Solids	134	4 Min	30 Min	1 (3)

(1) Double Vacuum Purge (2) Triple Vacuum Purge (3) Atmospheric Purge (No Vacuum)

Other Options and Accessories

Loading and unloading hoist

Baskets elevator for loading and unloading of autoclaves.

Swing facility for placing baskets onto a trolley. Total lift height: 2.35 m

Maximum crane load: 40 Kg. Power: 230V 300W

Available on all models

Part No: **1002426**

Pt 100 Sensor.

Floating temperature probe.

For Touchclave V and V+, this only provides the ability to be able to read the load temperature.

For Touchclave V+Dry, this is connected to the autoclave controller and to regulate the sterilization cycle based on load temperature.

Cat. No: **4001219**

Accessories for Vertical Autoclaves

Part No.	Ø	Height cm	Suitable for Autoclave Capacity	No. Baskets
1000495	27	20	50L	3
1000496	36	28	80L	2
1000780	44	22	150L	3
1000490*	26	19	50L	3
1000491*	36	26	80L	2
1000492*	47	20	150L	3

*304 grade stainless steel blind baskets.

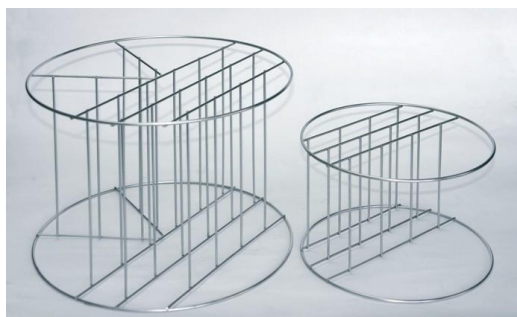


ASI 316 stainless steel wire dividers for autoclave baskets. Part No.

1001217 4 divider compartments for basket part no. 1000495.

1001218 6 divider compartments for basket part no. 1000496.

1001222 7 divider compartments for basket part no. 1000780.



LTE Scientific Ltd, Greenbridge Lane, Greenfield, Oldham, Lancashire OL3 7EN, United Kingdom

T: +44(0)1457 876221 F: +44(0)1457 870131 E: info@lte-scientific.co.uk

www.lte-scientific.co.uk

LTE reserves the right to alter the specifications of or withdraw its products without prior notice. E&OE